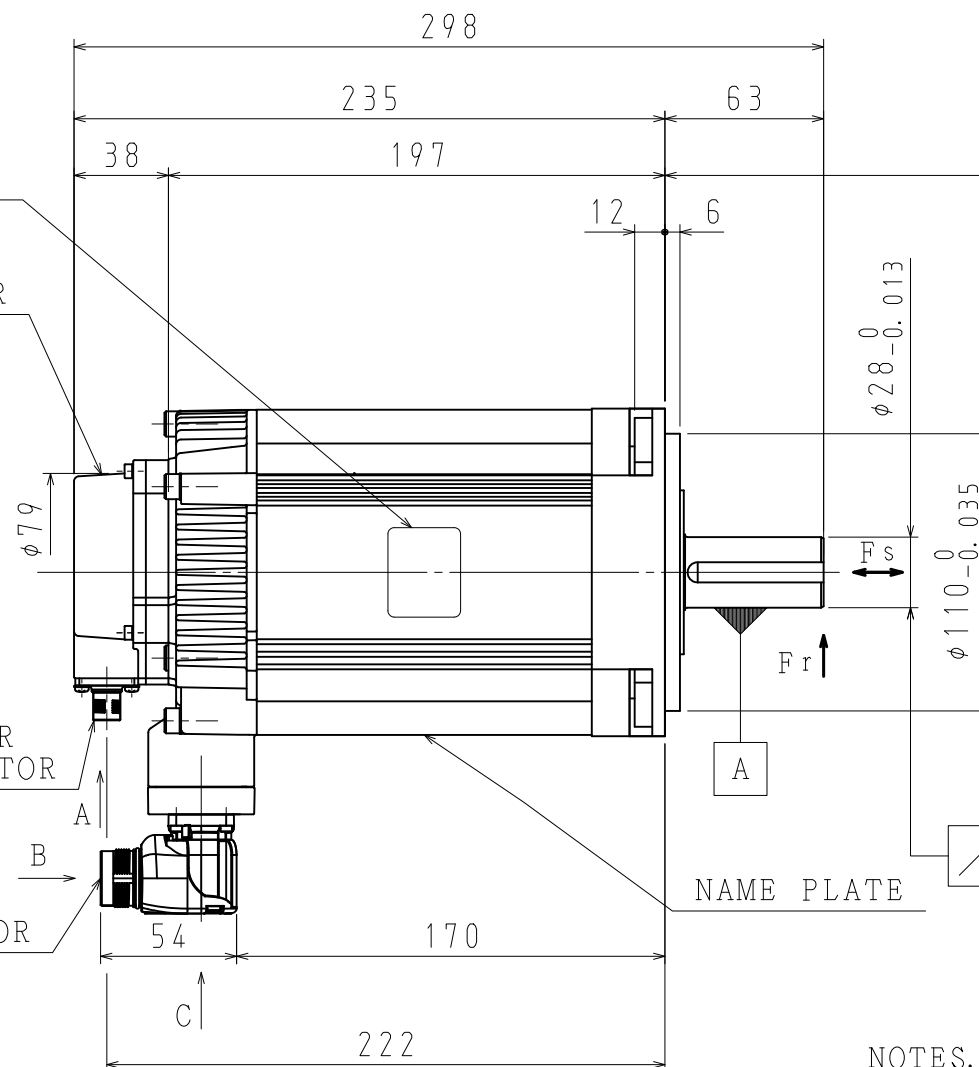
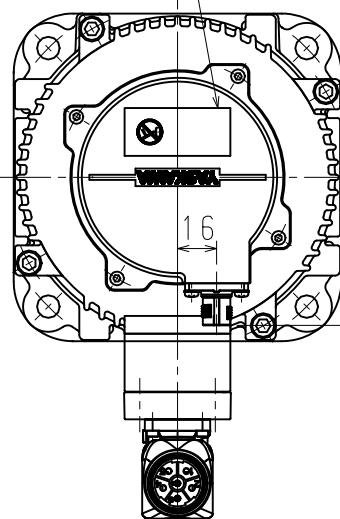
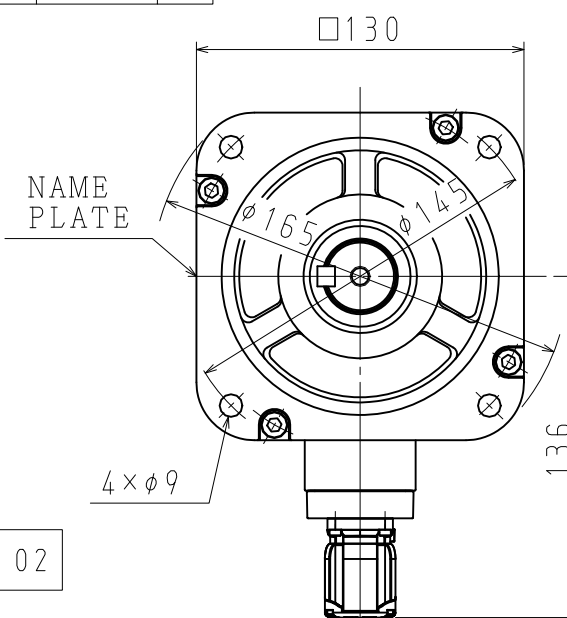


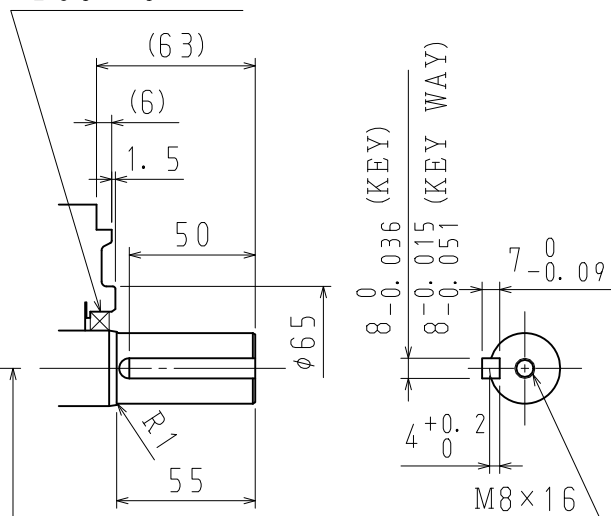
ENCODER

ENCODER
CONNECTORMOTOR
CONNECTORNAME
PLATE

NAME PLATE



DUST SEAL



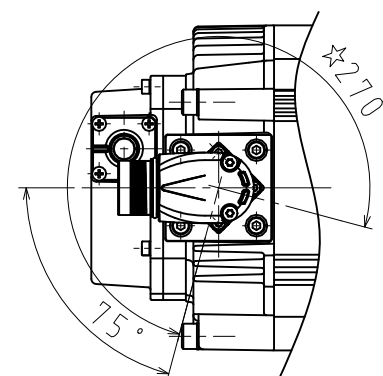
1. ALL DIMENSIONS ARE IN MILLIMETERS.
2. MOTOR SPECIFICATIONS : 900-172-604
3. ENCODER SPECIFICATIONS: 900-172-503 (24BIT ABSOLUTE)
4. VIBRATION : 15 μ m OR BELOW AT RATED SPEED.
5. PLUGS AND CABLE CLAMPS ARE OPTIONAL.
6. READ AND UNDERSTAND DOCUMENT PACKED WITH MOTOR
(SAFETY PRECAUTIONS), AND BE CAREFUL USING MOTOR.
7. DEGREES OF PROTECTION: IP67 EXCEPT FOR SHAFT OPENING.
MUST USE SPECIFIED CONNECTORS FOR MOTOR.
8. DO NOT TOUCH EACH OF CONNECTOR PINS DIRECTLY. IT CAUSE FAILURE.
9. IN CASE OF MOUNTING THIS MOTOR HORIZONTAL, TO PLACE
THE CONNECTOR DOWN IS RECOMMENDABLE.
10. USE HEXAGON SOCKET HEAD CAP SCREWS FOR MOUNTING MOTOR.
11. MOTOR CONNECTOR COULD BE TURNED IN THE RANGE OF ☆ WITHIN 10 TIMES.

MOTOR TERMINAL CONNECTION

VIEW A

VIEW A

VIEW B



VIEW C

RECEPTACLE SIZE:M23

HOUSING:SF-5EP1N8AAD00S

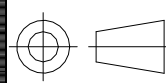
MAKER:PHOENIX CONTACT

RECEPTACLE SIZE:M12

HOUSING:SACC-MSQ-M12MS-25-3, 2 SCO

MAKER:PHOENIX CONTACT

TYPE	RATED OUTPUT kW	RATED TORQUE N·m	TIME RATING	RATED SPEED min ⁻¹	VOLTAGE V _{rms}	RATED CURRENT A _{rms}	THERMAL CLASS	WEIGHT kg	ALLOWABLE RADIAL LOAD F _r N	ALLOWABLE THRUST LOAD F _s N
SGM7A-40D7F6F	4.0	12.6	CONT.	3000	400 (3PHASE)	12.5	F	14.0	1176 (AT SHAFT END)	392



SCALE 1 : 3

YASKAWA

DRWN.	H. KATO
CHKD.	T. HIROSE
APRV.	K. AOKI

TITLE	AC SERVOMOTOR Σ -7 SERIES
	SGM7A MODEL 4.0 kW

DRWN. DATE	Oct. 19' 15
DWG. NO.	900-185-9'

REV

SIZE	A3
------	----